

## SPECTATOR ZONE 9

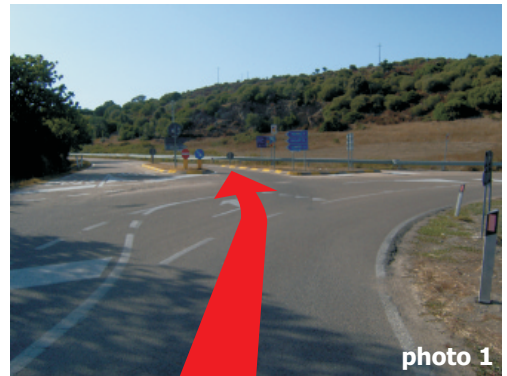
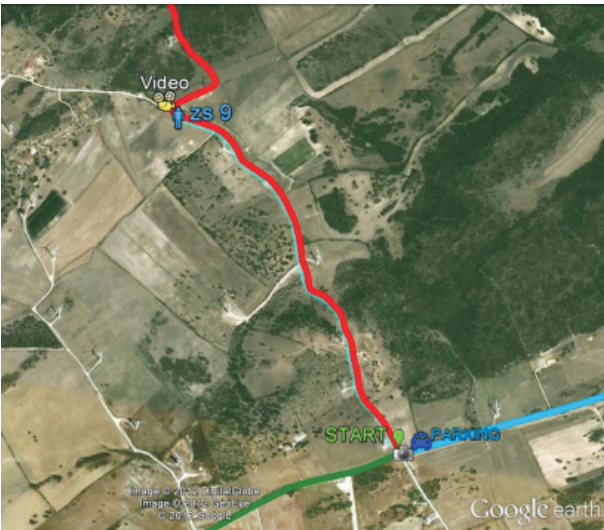


photo 1



photo 2

## Features:

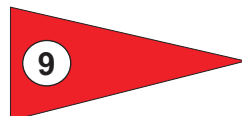
GPS: N 40° 52,002 E 8° 46,222

Distance from Start: da 0,50 a 1,36 Km

Description: Straights and fast corners in between wind farm precincts.

## Access road:

Way-point: 07035 Sedini (SS)



1. Cross Sedini direction CASTELSARDO
2. Continue on SS134 and after 1.2km turn left direction TERGU (photo 1)
2. After 2.3km park on SP 143
3. Walk through the gate on the left of the START line (photo 3) and keep walking through the fields