

## Orari di Chiusura e di Partenza delle Vetture Ufficiali da Inizio PS Itinerary Closing Time Table and Official Cars Starting Time from SS Start

PS	chiusura percorso	partenza Tricolore	partenza Safety 4	partenza Safety 3	partenza FIA/CSAI	partenza Safety 2	partenza Safety 1	partenza 00	partenza 0	partenza 1 <sup>a</sup> vett.	
SS	Km.	itinerary closing	Tricolour start	Safety 4 start	Safety 3 start	FIA/CSAI start	Safety 2 start	Safety 1 start	00 start	0 start	1 <sup>st</sup> car start

### Giovedì 18 ottobre 2012 - Thursday 18 October 2012

1	28,14	13:13	14:13	14:43	15:13	15:28	15:33	15:43	15:53	15:58	16:13
2	28,14	==	==	==	==	==	17:46	17:51	17:56	18:01	18:16

### Venerdì 19 ottobre 2012 - Friday 19 October 2012

3	29,68	05:43	06:43	07:13	07:43	07:58	08:03	08:13	08:23	08:28	08:43
4	14,12	08:34	09:34	10:04	10:34	10:54	10:59	11:09	11:19	11:24	11:34
5	14,88	09:24	10:24	10:54	11:24	11:44	11:49	11:59	12:09	12:14	12:24
6	14,12	==	12:46	13:16	13:46	14:06	14:11	14:21	14:31	14:36	14:46
7	14,88	==	13:36	14:06	14:36	14:56	15:01	15:11	15:21	15:26	15:36
8	29,68	14:50	15:50	16:20	16:050	17:05	17:10	17:20	17:30	17:35	17:50

### Sabato 20 ottobre 2012 - Saturday 20 October 2012

9	29,35	06:28	07:28	07:58	08:28	08:43	08:48	08:58	09:08	09:13	09:28
10	14,49	07:35	08:35	09:05	09:35	09:55	10:00	10:10	10:20	10:25	10:35
11	14,12	08:37	09:37	10:07	10:37	10:57	11:02	11:12	11:22	11:27	11:37
12	29,35	==	12:48	13:18	13:48	14:03	14:08	14:18	14:28	14:33	14:48
13	14,49	==	13:55	14:25	14:55	15:05	15:20	15:30	15:40	15:45	15:55
14	14,12	==	14:57	15:27	15:57	16:17	16:22	16:32	16:42	16:47	16:57

### Domenica 21 ottobre 2012 - Sunday 21 October 2012

15	8,24	06:20	07:20	07:50	08:20	08:45	08:50	09:00	09:10	09:15	09:20
16	8,24	==	==	10:30	10:30	10:35	10:40	10:45	10:50	10:55	11:00

### Vetture autorizzate al transito sui percorsi di PS negli intervalli tra quelle sopra descritte Vehicles allowed to transit on the SS route in between the above stated ones

#### Vetture con targa MEDIA • MEDIA plate

- autorizzate a partire da Inizio PS fino a 2h.00 prima del 1° concorrente; devono precedere la vettura Tricolore
- allowed to start from SS Start till 2.00 hrs before the 1<sup>st</sup> competitor and have always to precede the Tricolour flag car

#### Vetture con targa Stage 1-T • Stage 1-T plate

- autorizzate a partire da Inizio PS fino a 1h.30 prima del 1° concorrente; devono precedere la vettura S4
- allowed to start from SS Start till 1.30 hrs before the 1<sup>st</sup> competitor and have always to precede the S4 car

#### Vetture con targa MEDIA TABARD e INFO CAR • MEDIA TABARD and INFO CAR plate

- autorizzate a partire da Inizio PS fino a massimo 1h.00 prima del 1° concorrente; devono precedere costantemente la vettura S3
- allowed to start from SS Start till maximum 1.00 hr before the 1<sup>st</sup> competitor and have always to precede the S3 car

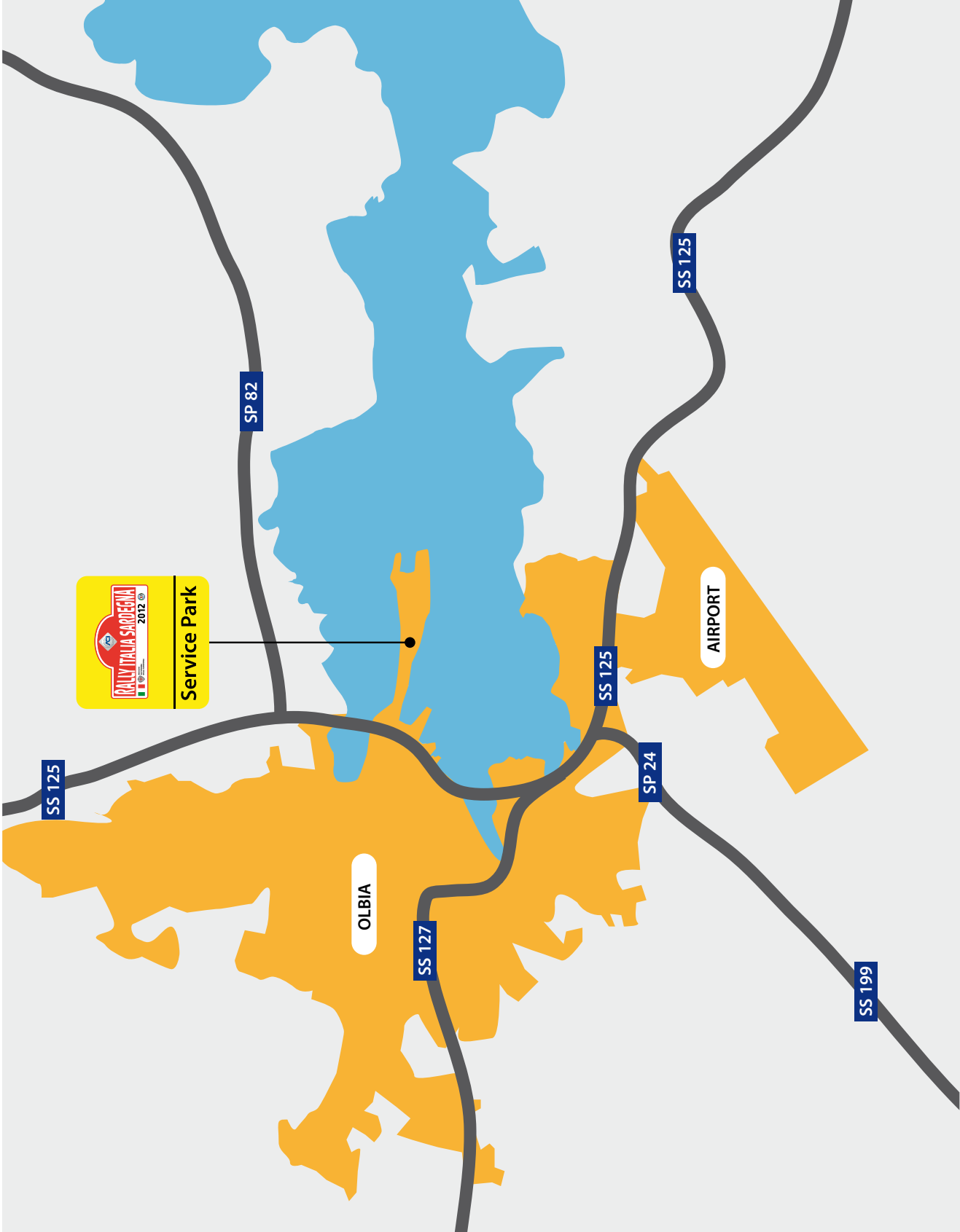
#### Vetture con targa FIA DELEGATE o STEWARD • FIA DELEGATE or STEWARD plate

- autorizzate a partire da Inizio PS fino a massimo 30' prima del 1° concorrente; devono precedere costantemente la vettura S2
- allowed to start from SS Start till maximum 30 minutes before the 1<sup>st</sup> competitor and have always to precede the S2 car

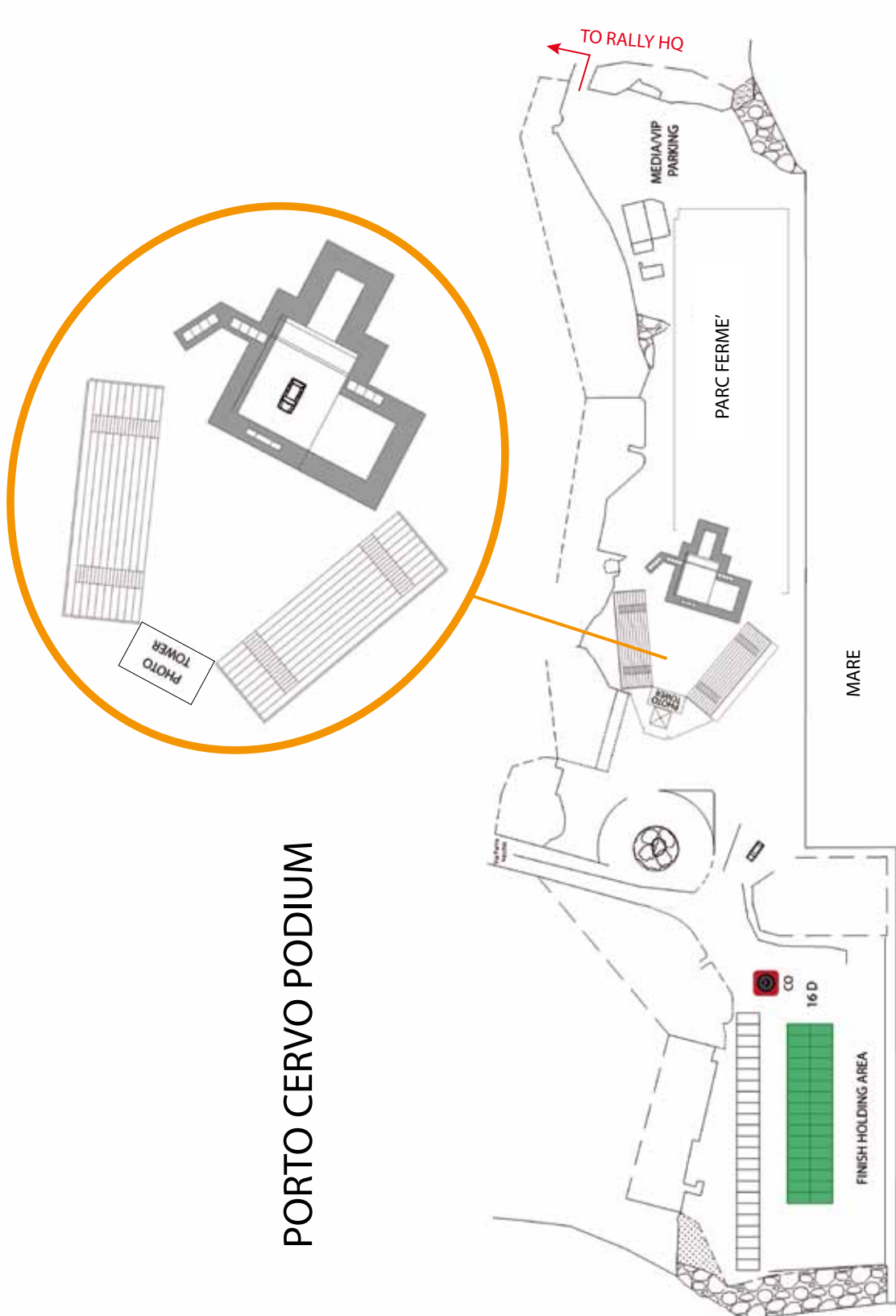
#### Vettura con targa FIA SAFETY DELEGATE • FIA SAFETY DELEGATE plate

- autorizzata a partire da Inizio PS fino a 20' prima del 1° concorrente; deve precedere sempre la vettura S1
- allowed to start from SS Start till 20 minutes before the 1<sup>st</sup> competitor and have always to precede the S1 car

# Mappa di Olbia • Olbia Map

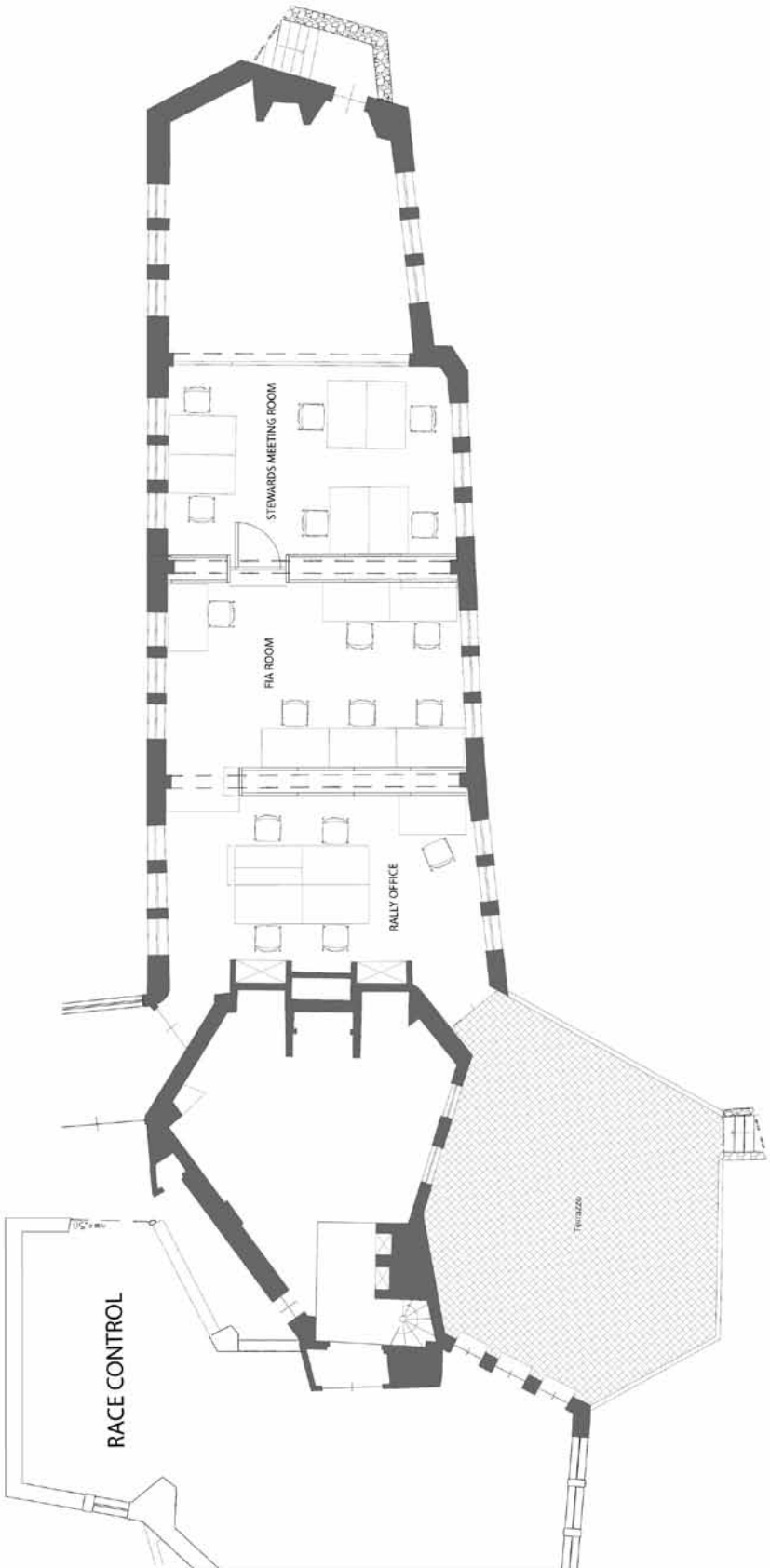


## Porto Cervo Podium

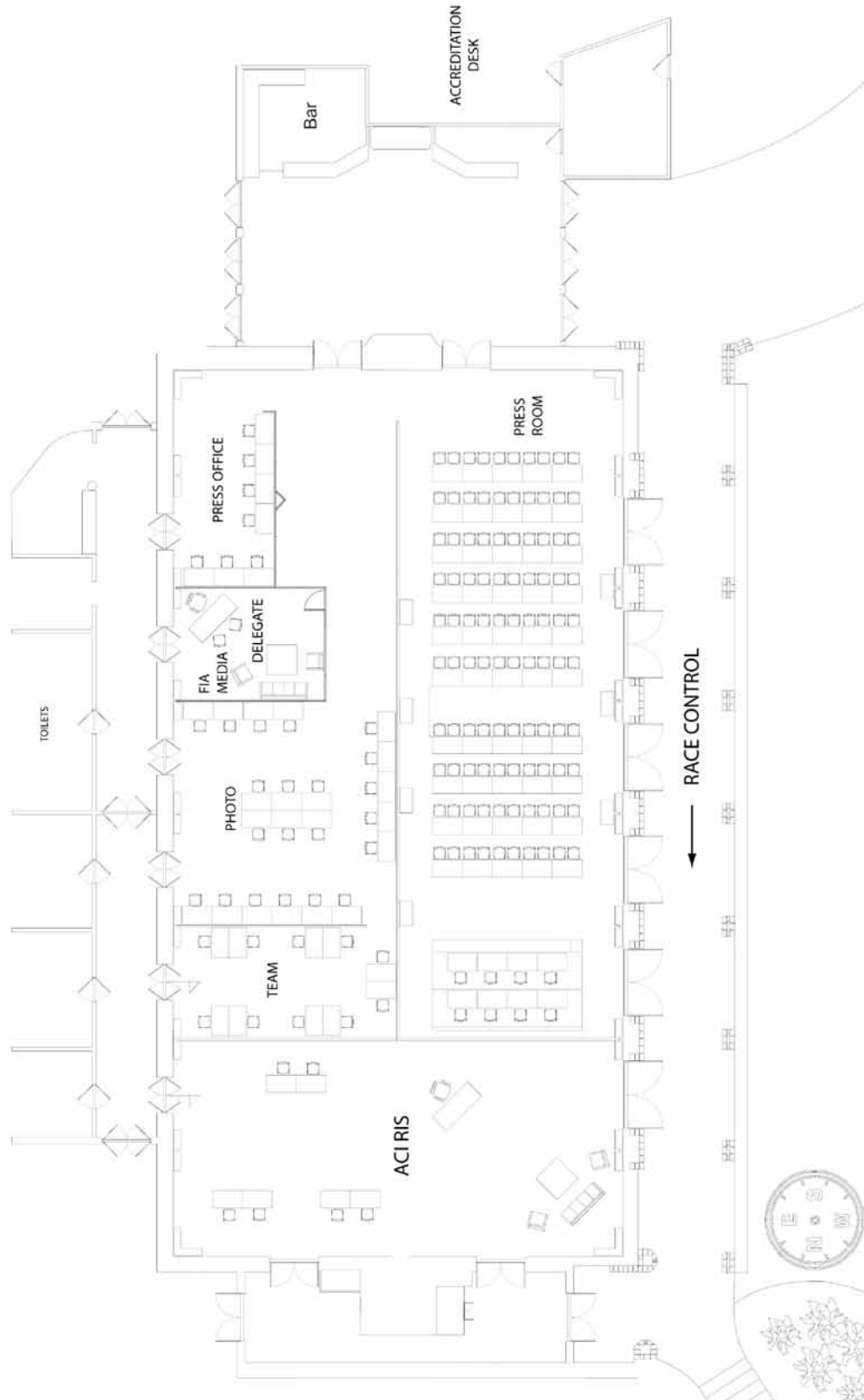


PORTO CERVO PODIUM

# Quartier Generale del Rally • Rally Head Quarter - Rally Control

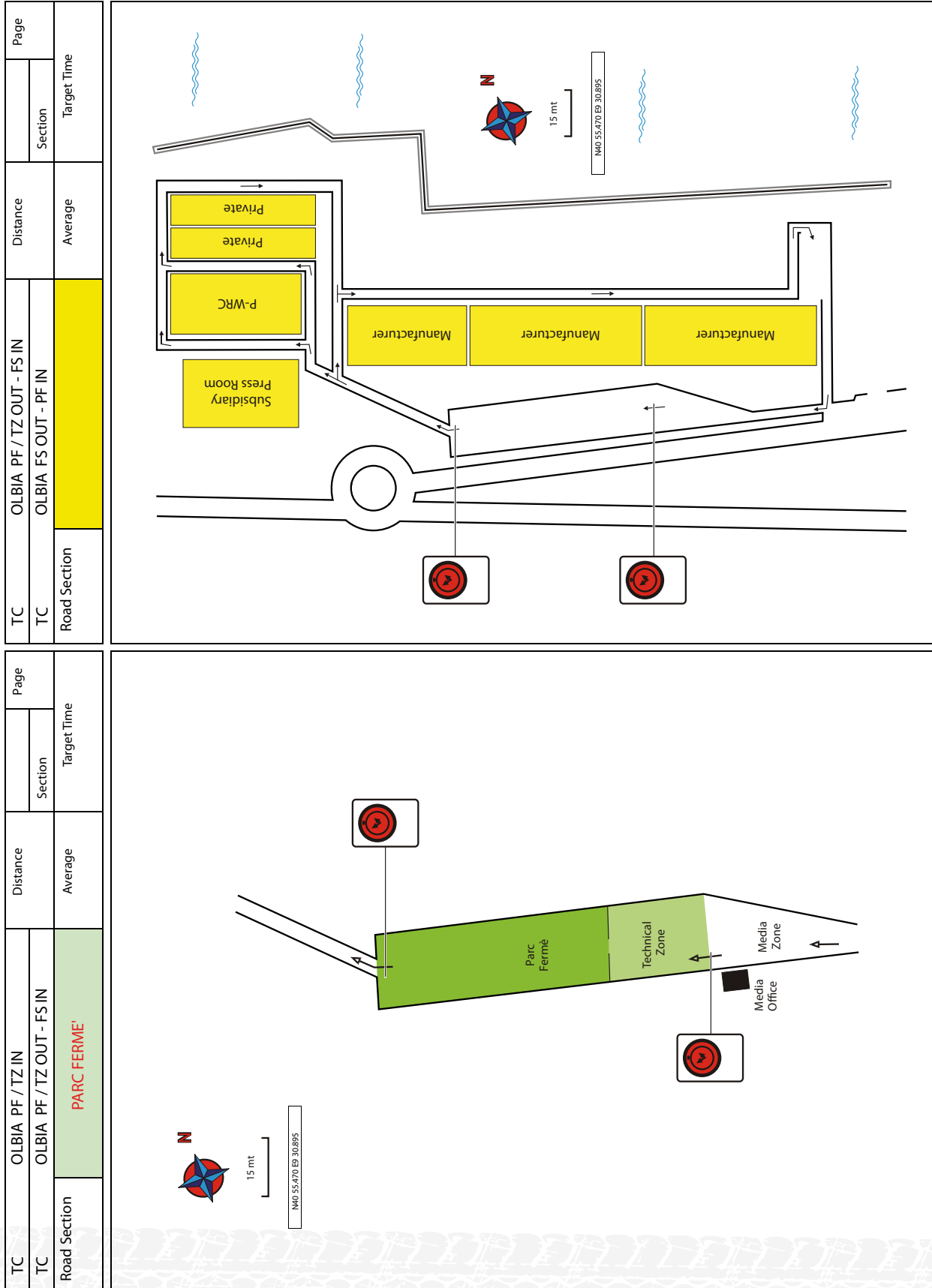


## Quartier Generale del Rally • Rally Head Quarter - Media Centre

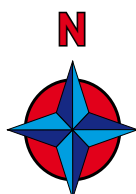
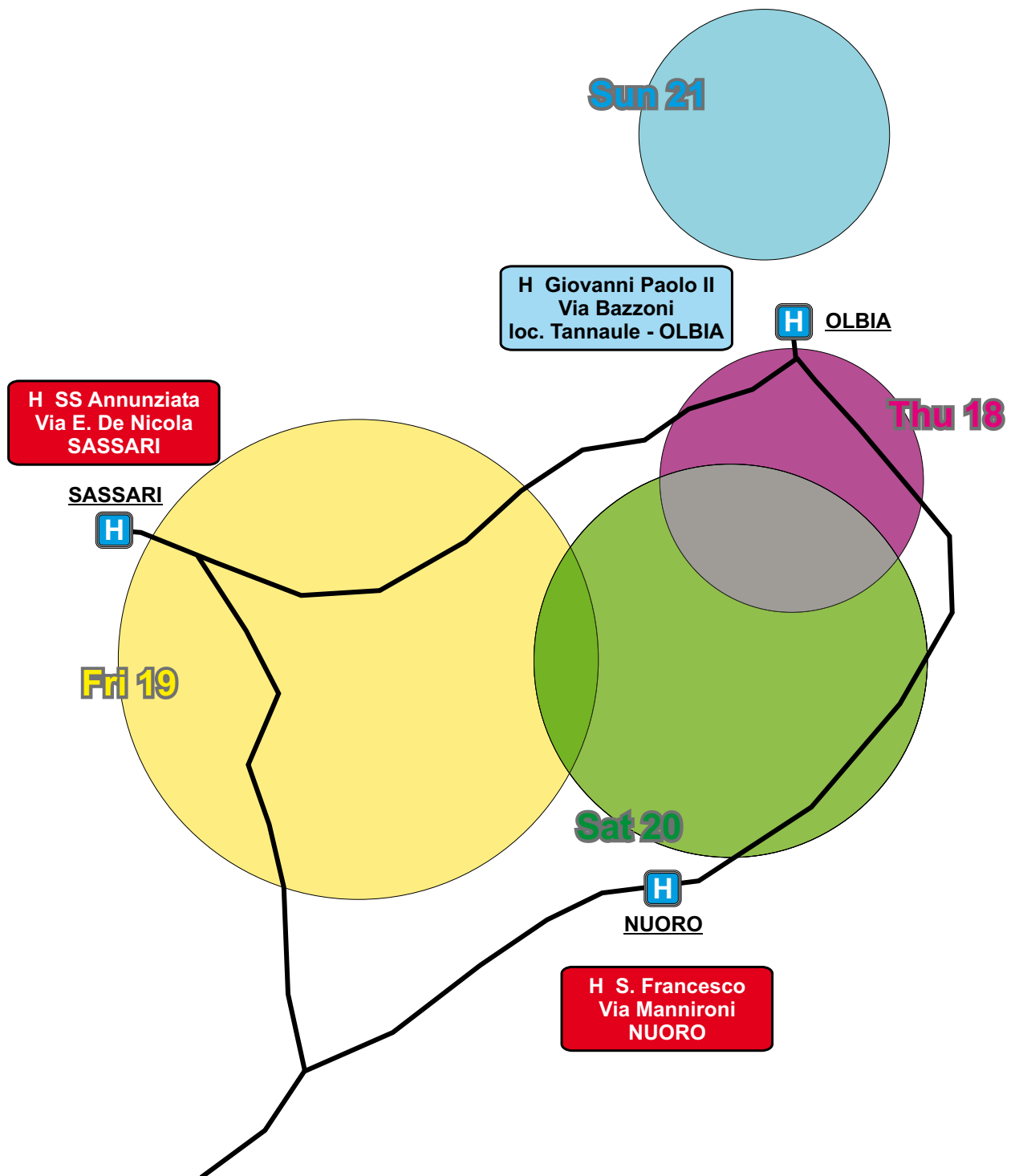




## Layout Parco Assistenza • Layout Service Park



## Ubicazione Ospedali • Hospital Locations



SASSARI	N 40 42.970	E 08 34.299
NUORO	N 40 19.589	E 09 18.892



